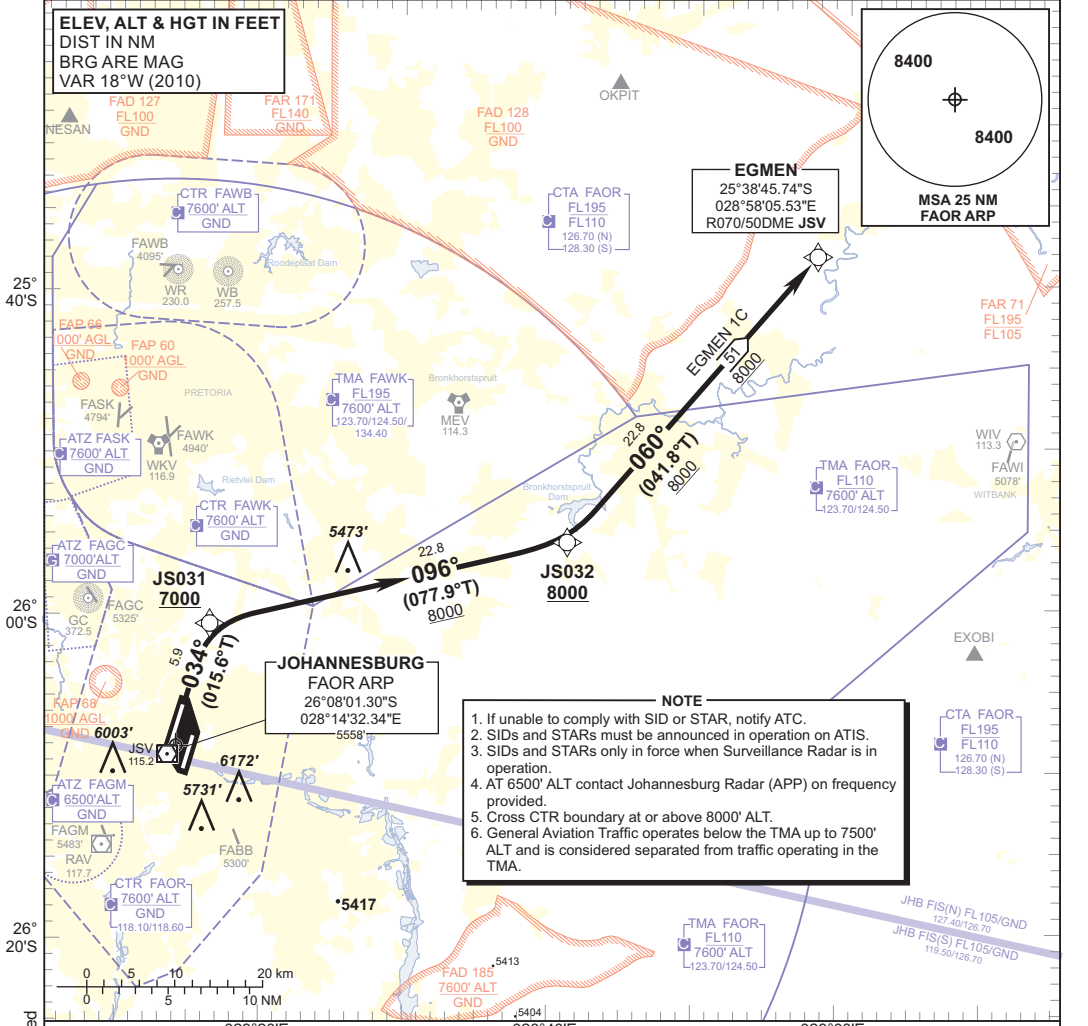


**STANDARD DEPARTURE
CHART -
INSTRUMENT
(SID)**

TRANSITION ALTITUDE
8000'
TRANSITION LEVEL
ATC

RADAR APP S 124.50 TWR E 118.60
E 124.50 W 118.10
W 123.70 ATIS 126.20
DIR 121.40 115.20
ACC N 126.70 SMC 121.90

JOHANNESBURG
(O.R. TAMBO INTERNATIONAL)
RNAV (GNSS) RWY 03L
EGMEN 1C



NOTE

1. If unable to comply with SID or STAR, notify ATC.
2. SIDs and STARs must be announced in operation on ATIS.
3. SIDs and STARs only in force when Surveillance Radar is in operation.
4. AT 6500' ALT contact Johannesburg Radar (APP) on frequency provided.
5. Cross CTR boundary at or above 8000' ALT.
6. General Aviation Traffic operates below the TMA up to 7500' ALT and is considered separated from traffic operating in the TMA.

**JOHANNESBURG
FAOR ARP**
26°08'01.30"S
028°14'32.34"E
5558'

EGMEN
25°38'45.74"S
028°58'05.53"E
R070/50DME JSV

8400

MSA 25 NM
FAOR ARP

**EGMEN 1C.
RWY 03L**

Climb to FL090, maintain RWY track to JS031. At JS031 turn right to JS032. At JS032 turn left to EGMEN. Further climb will be under radar control. At EGMEN set course as per flight plan.

Restricted to a minimum climb gradient of 4.1% to CTR boundary.
4.1% @ 140KT IAS = 581 FPM
4.1% @ 180KT IAS = 747 FPM
4.1% @ 220KT IAS = 913 FPM

COMMUNICATION FAILURE PROCEDURE (Squawk 7600)

Comply with EGMEN 1C SID, climbing to FL090 or maintain last assigned level, whichever is the highest. At EGMEN set course as per flight plan and climb to flight plan level.

Aircraft wishing to return must continue to the SID termination point and climb to the last assigned level or MSA if cleared level is below MSA. At EGMEN proceed to OKPIT and comply with the OKPIT 4A RWY 03R STAR Communication Failure Procedure.

Location Indicator FAOR /
CHANGE: NDB JBUN & JA decommissioned